

STELLAR TEAM

NOBLE MISSION



March 2021

Homeland Defense Radar – Hawaii Environmental Impact Statement Rescoping Update

Missile Defense Agency



Missile Defense Agency Mission

To develop and deploy a **layered** Missile Defense System to **defend** the United States, its deployed forces, allies, and friends from missile attacks in **all phases** of flight



**Missile Defense Capability
Globally Deployed**



Why is the HDR-H Needed?

THE WHAT

The National Defense Authorization Act (NDAA) Fiscal Year (FY) 2017 requires MDA to develop a plan to procure a discrimination radar, or equivalent sensor, for a location that will improve homeland missile defense for the defense of Hawai'i. A "discrimination radar" is capable of identifying and classifying specific missile threats. The NDAA FY 2021 authorizes MDA to continue Homeland Defense Radar-Hawaii (HDR-H) radar development and siting efforts. The FY 2021 Appropriations Bill provided funding to continue the efforts in FY 2021. Therefore, MDA is engaged in Advanced Planning studies and preparing an Environmental Impact Statement (EIS) for the siting and development of the HDR-H, should a deployment decision be made and is funded.

THE WHY

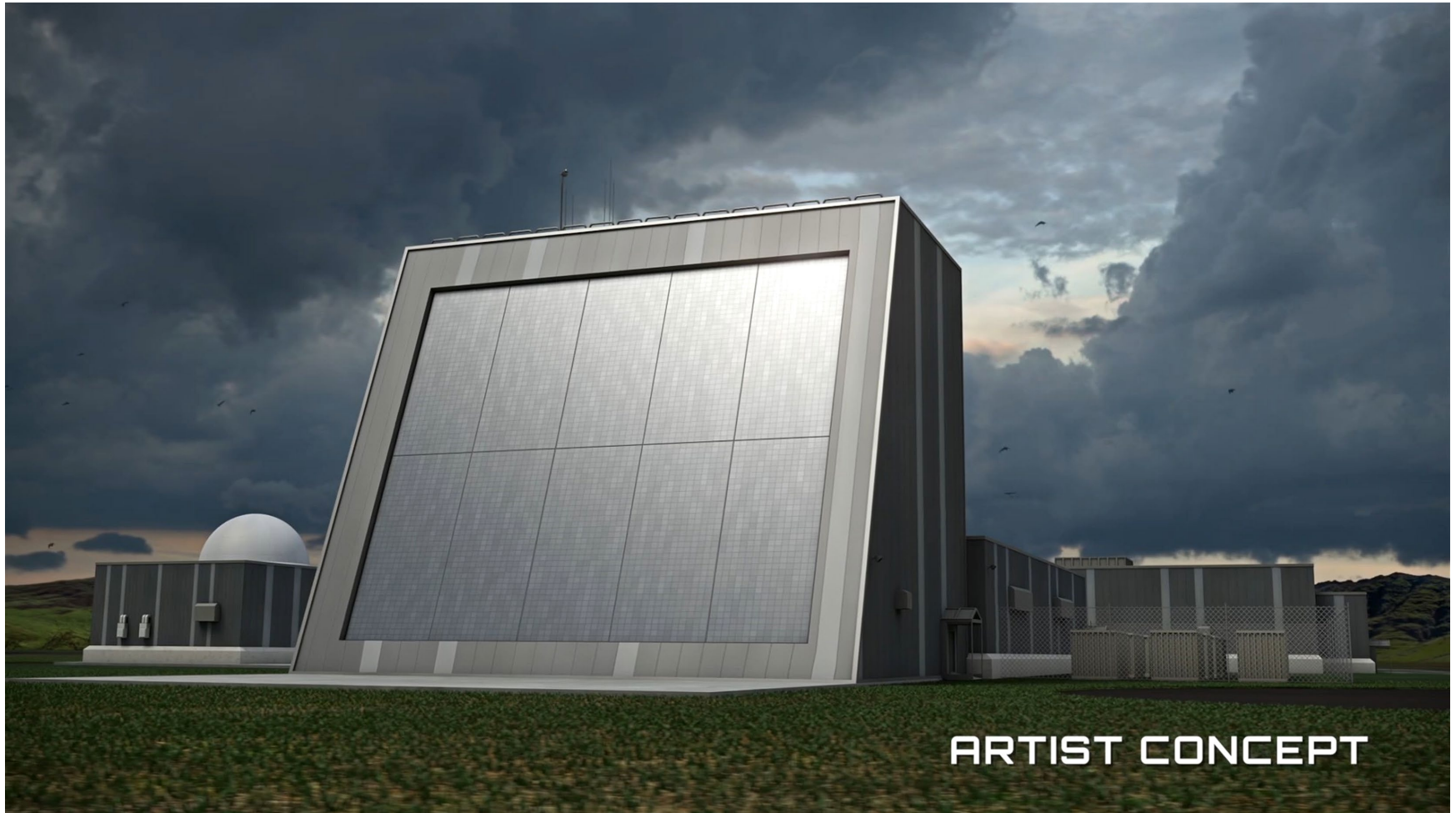
Strengthen United States missile defense capabilities

Increase the Missile Defense System effectiveness against future complex threats

Optimize support of the Nation's current defense system by tracking, identifying, and classifying missile threats to Hawai'i



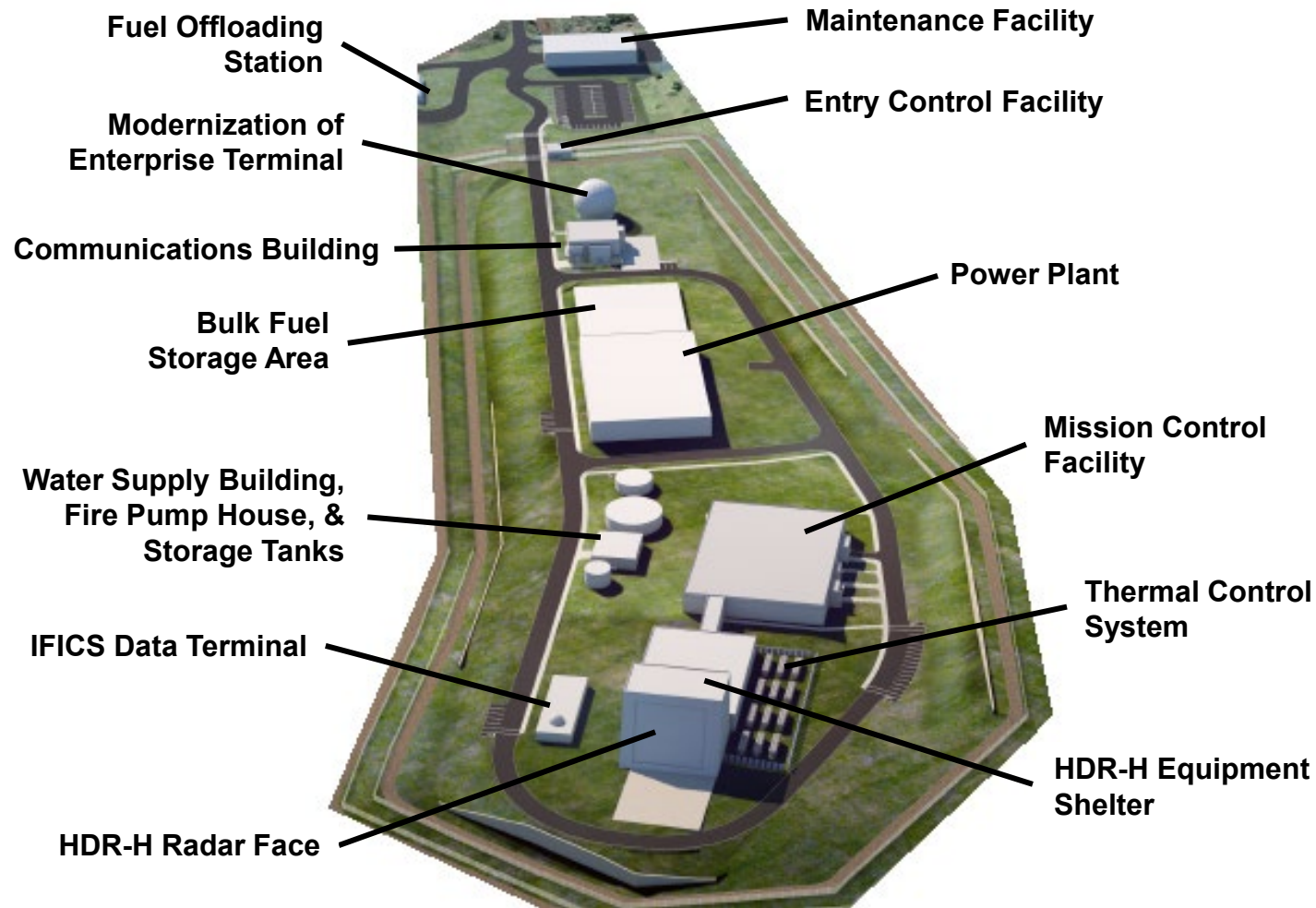
Notional Rendering of HDR-H





HDR-H System Facilities

Notional Layout of the HDR-H Complex





HDR-H Environmental Impact Statement Process

The National Environmental Policy Act (NEPA) requires MDA to consider potential environmental impacts of the proposed action and alternatives and provide the public opportunities to comment.

1 Identify Sites

2 Prepare DOPAA

3 Publish NOI in FR

We are here

4 Public Scoping

→ Prepare Draft EIS

5 Publish NOA in FR, DEIS to Public

→ 45-Day Minimum Public Comment Period

6 Public Review/ Meetings

→ Prepare Final EIS

7 Publish NOA in FR, FEIS to Public

→ 30-Day Mandatory Waiting Period

8 Release ROD/ Publish in FR

9 Implement Action

MDA will:

- Gather information about current environmental quality;
- Conduct studies, surveys, and research to analyze potential impacts of project to the environment; and
- Prepare Environmental Impact Statement, detailing the potential impact of proposed construction and operations.

MDA recognizes the importance of environmental resources and local cultural and archaeological resources; we will work to minimize the impact of construction.

ACRONYM KEY

DEIS: Draft Environmental Impact Statement
DOPAA: Description of Proposed Action and Alternatives
FEIS: Final Environmental Impact Statement
FR: Federal Register
NOA: Notice of Availability
NOI: Notice of Intent
ROD: Record of Decision



Reopening of HDR-H EIS Scoping Process

2018 Scoping

- Public scoping meetings held in Hale'iwa, Wai'anae, and Honolulu.
- Sites carried forward for further review were: Kuaokalā Ridge, Kahuku Training Area (KTA) Site 1, and KTA Site 2.
- Public comment period held from June 1 to July 16, 2018.

2021 Scoping Reopening

- Public Online Open House Website
- Telephone Public Meetings (March 23 & March 25, 2021).
- Two sites on O'ahu were removed from further consideration (KTA Site 2 and Kuaokalā Ridge).
- A site at the Pacific Missile Range Facility (PMRF) on Kaua'i was added as an alternative site.
- Identification of proposed restricted airspace.
- If the HDR-H is constructed on O'ahu, the U.S. Air Force's Solar Observatory would be relocated from O'ahu to either Maui or Kaua'i.
- Public Comment Period: Feb 26 to April 12, 2021

All public comments will be considered in the upcoming Draft EIS



Environmental Resources To Be Analyzed

Airspace & Air Quality

The potential impacts on ambient air quality and airspace usage or encroachment issues



Biological Resources

The potential impacts on wildlife and vegetation



Cultural Resources

The potential impact on cultural resources, historic properties, and resources of traditional or cultural significance



Hazardous Materials & Waste and Health & Safety

The potential impact from hazards to human health or environment, public health and safety issues associated with the construction of the HDR-H, as well as public health and safety issues associated with the operation of the HDR-H



Land Use & Recreation

The compatibility of existing planned uses (existing, planned, and future) of the land footprint at the proposed site



Water

The potential impact on water resources (to include surface water, groundwater, wetlands, and floodplains)



Transportation

The potential impact on the movement of personnel, equipment, and materials to and from the project area



Coastal Environment

The potential impact on the coastal zone and its resources



Geology & Soils

The potential impact on geological and soil conditions in the vicinity of the project area



Utilities

The potential impact from constructing new lines (above/below ground) and use of existing utilities (such as water, wastewater treatment, electricity, and natural gas)



Socioeconomics (including Environmental Justice)

The potential impact on the population, employment, housing, schools, public services, and environmental justice



Visual Aesthetics

The potential impact from the Proposed Action on visual resources on and around the project area



Noise

The potential impact from any unwanted sound that can disturb routine activities and cause annoyance



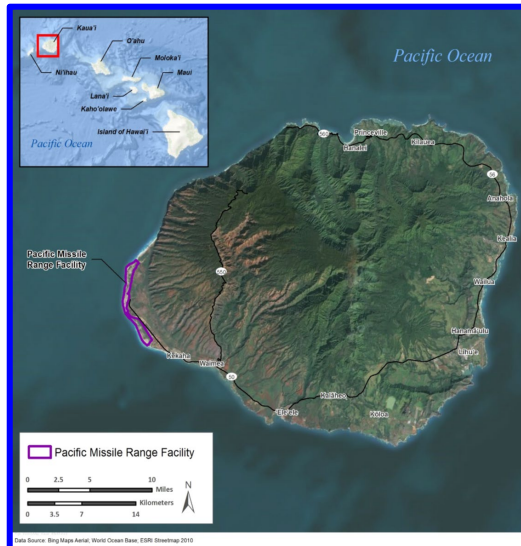


HDR-H Alternative Sites



Kahuku Training Area Site 1 – O‘ahu

- Near northern end of O‘ahu
- Located on northern slopes of Ko‘olau Mountain Range
- DoD property, U.S. Army–Hawai‘i managed training area



Pacific Missile Range Facility – Kaua‘i

- On western shore of Kaua‘i
- DoD property, U.S. Navy managed test and training range



Additional Information



<https://www.mda.mil/hdrh.html>

STELLAR TEAM

NOBLE MISSION

